

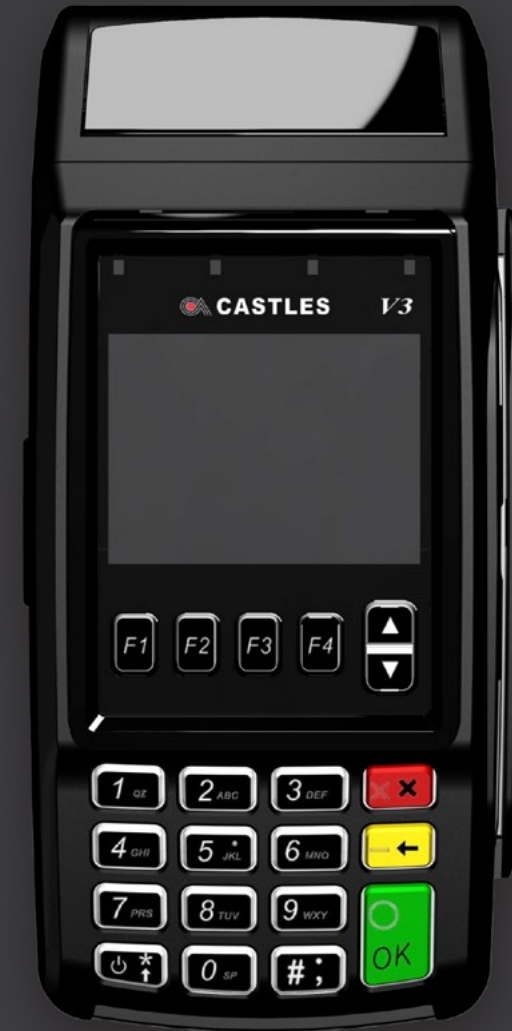
xln | pay

Getting started with your Castles V3C Countertop

Thank you for ordering the Castles V3C Countertop payment terminal.

In the box you will find:

- V3C (Countertop) terminal
- AC Power adaptor and power core
- LAN (Ethernet) cable
- Dial (Line) cable
- 2x Till Rolls
- Installation guide



Step 1

Place the terminal on a flat surface with the screen facing down.

Step 2

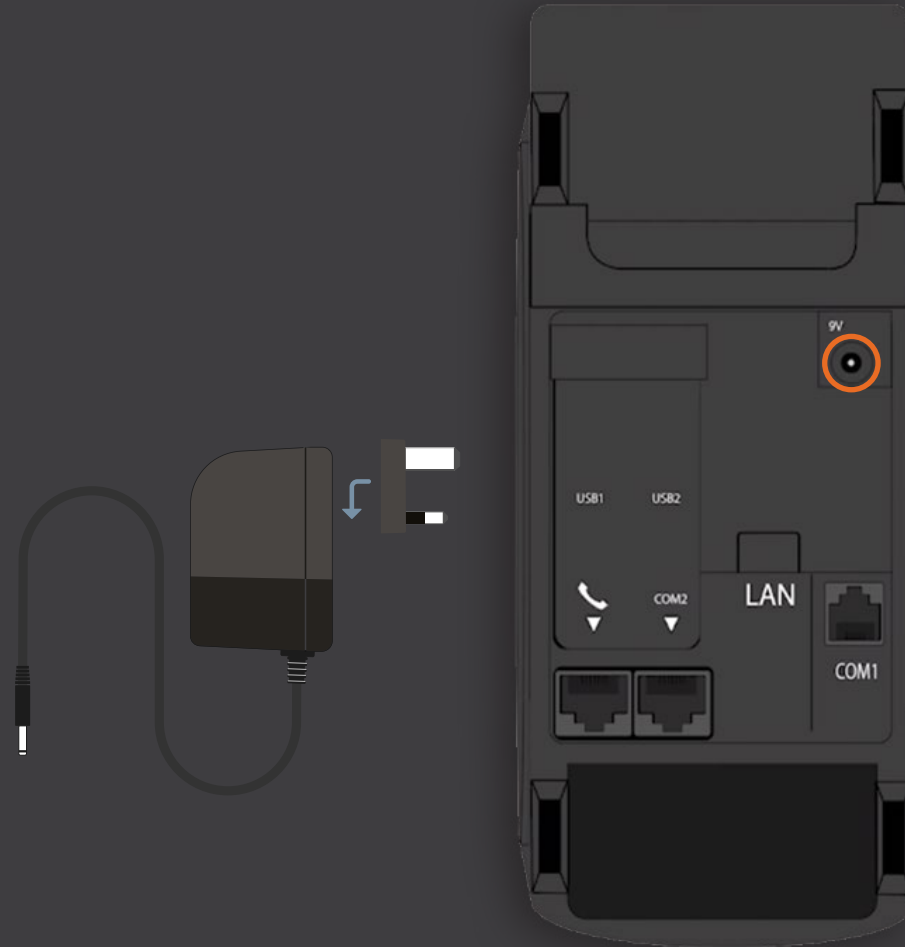
Unlock the clip from the cable tidy bridge and lift it up.

Step 3

Connect power supply into the **9V socket**, with the other end plugged into the power outlet.

Step 4

Switch on the power outlet.

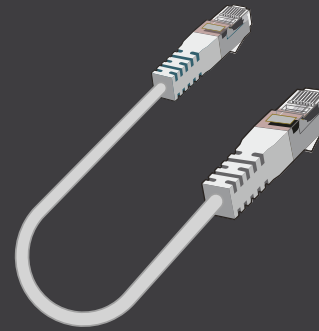


Step 1

Connect the Ethernet cable into the **LAN port** on the back of the terminal.

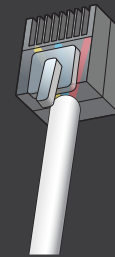
Step 2

Connect the other end of the Ethernet cable into the internet source (your router).



Step 1

Connect the clear square end cable into the **port with the phone symbol**. The other end of the cable connects to the telephone box.



Step 1

Pull upwards on the lever located in the middle of the printer door.



Step 2

Place the till roll in the compartment. The paper must feed from underneath the roll.



Step 3

Close the printer door.



Step 1

Press and hold the **power button** until the screen lights up. The terminal will power on and initialise for use.

Step 2

When the **'enter amount'** screen is displayed, attempt a test transaction with your own payment card. An **'approval'** message will be displayed after a successful transaction.

