

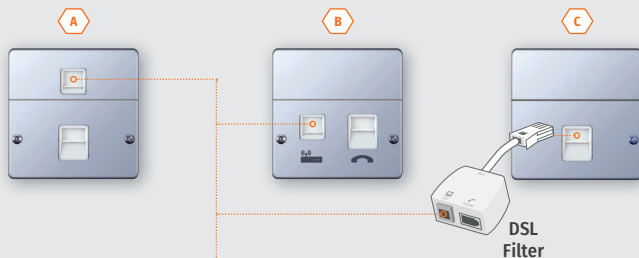
To get up and running, plug in your router and follow these steps. Before you start, check which type of telephone socket you have by looking at the diagrams below.

## Step 1

### Connection types

Look at your telephone socket.

- Socket styles **(A)** and **(B)** - No DSL filter needed.
- Socket style **(C)** - DSL filter essential.

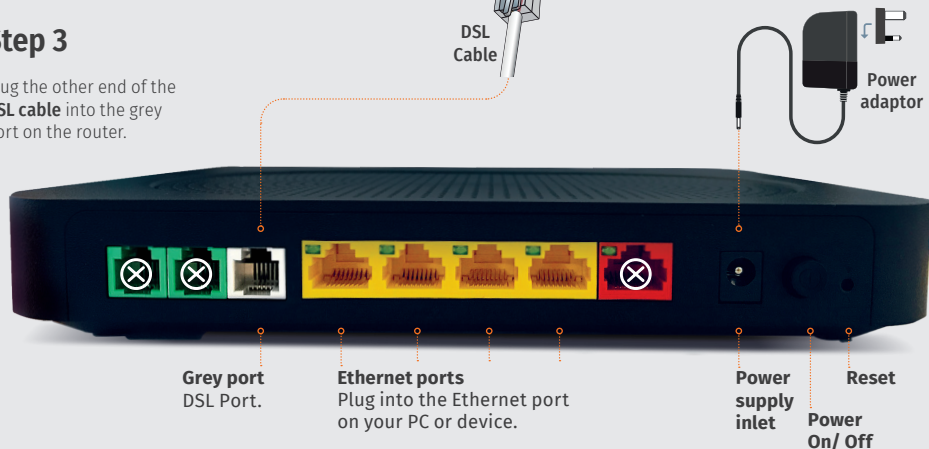


## Step 2

Plug the **DSL cable** directly into the sockets illustrated on either Socket A or B, or into the DSL filter for Socket C.

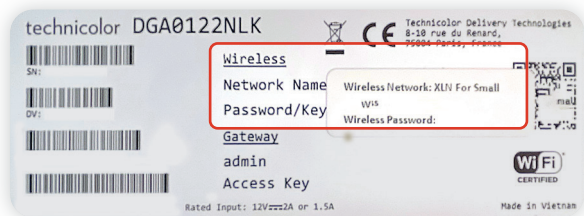
## Step 3

Plug the other end of the **DSL cable** into the grey port on the router.



## First things first

Your wireless settings are underneath your router.

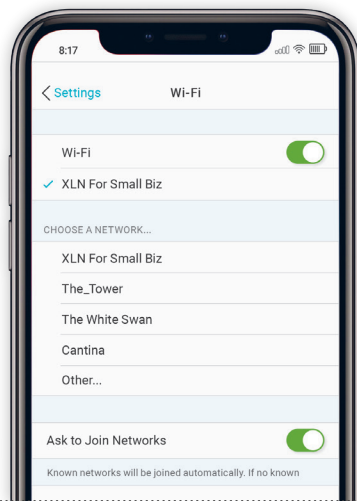


## Setting up wireless connectivity

Connecting all your devices to your new connection is easy. Just follow these simple steps:

- 1 Using your wireless enabled device, such as a laptop, smartphone or tablet, search for your available wireless networks.
- 2 From the list of available wireless networks, select 'XLN For Small Biz' and then enter your unique password that can be found on the bottom of your router.

**Please note, this is different to setting up and using Public Wi-Fi.**



## Here to help

If you're having technical issues, we're here always to help.

**email:** [bbtechnical@xlntelecom.co.uk](mailto:bbtechnical@xlntelecom.co.uk)  
**visit:** [www.xln.co.uk/faqs](http://www.xln.co.uk/faqs)  
**call:** 0808 178 5200

